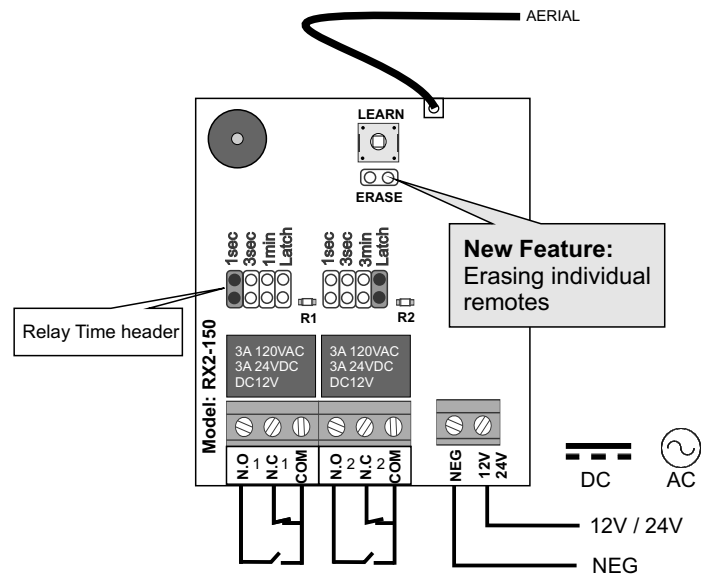


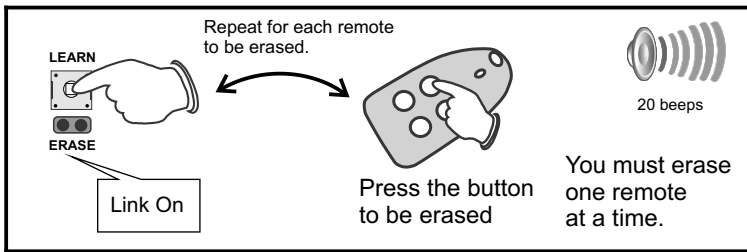
SPECIFICATIONS:

Encryption.....	Keeloq Code-Hopping
Frequency.....	403.55MHz
Receiving range.....	150m
Power input range.....	10 ~ 26V AC/DC
Current drain.....	13mA, 12VDC
Memory capacity.....	40 Remotes per Channel
Relay output times.....	0.5 second momentary
.....	1 second momentary
.....	3 / 30 second momentary
.....	Latching
.....	On / Off function
.....	1 & 3 Minute
Dimensions.....	100 X 60 x 25mm
Weight Packed.....	0.078kg / 78grams
Warranty.....	1 year
PCB Revision no.....	RX2-150_V2.02
Release date.....	Nov 2012

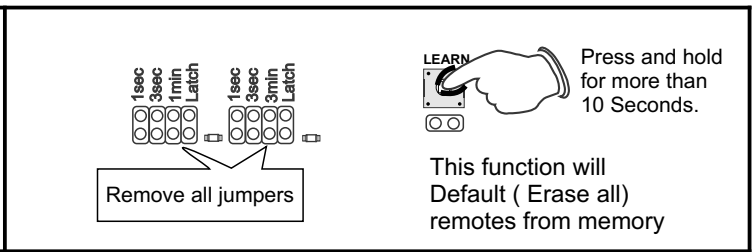


New Feature:
Erasing individual remotes

Erasing Individual remotes.

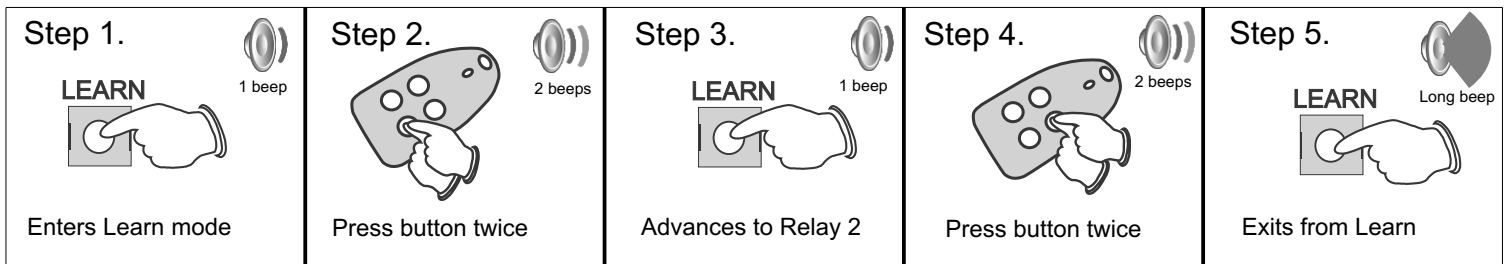


Defaulting.



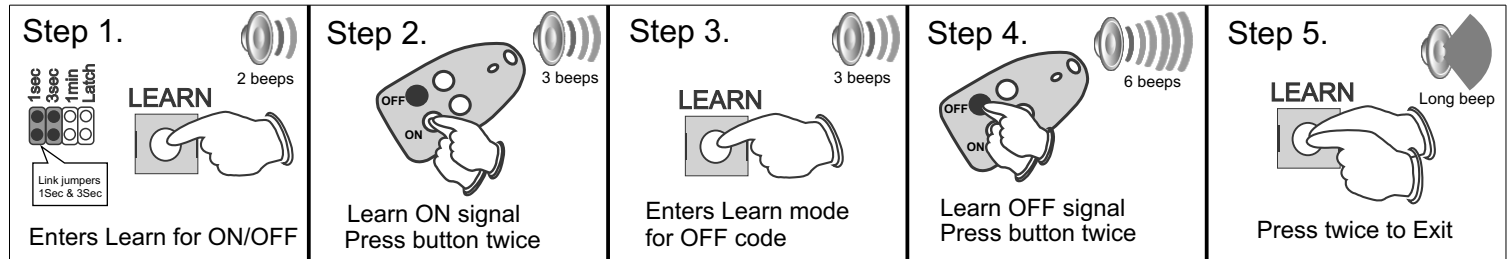
Programming

Please follow the steps below to Learn in remotes to the receiver's relevant relay channel. The unit can store up to 40 remotes per relay. When memory has reached its limit the unit will automatically exit out of program mode and sound a long beep. The unit auto exits after 10 seconds.



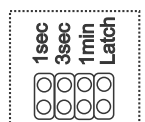
Programming On/Off Function

This function enables the receiver to be programmed with a button to turn the relay ON and a different button to turn the relay OFF.



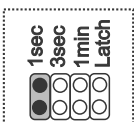
Relay time settings

0.5 Second



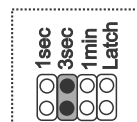
Garage door automation

1 Second



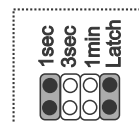
Gate & garage door automation

3 Seconds



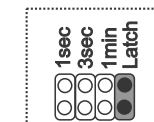
Panic on alarm panel

30 Seconds



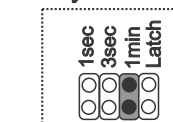
Maglock release / beam bypass

Latch & Unlatch



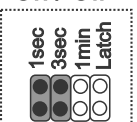
Arming & Disarming alarm panels

Relay 1 = 1 Minute Relay 2 = 3 Minute



Siren output or beam bypass

On / Off



Code 1 = ON
Code 2 = OFF